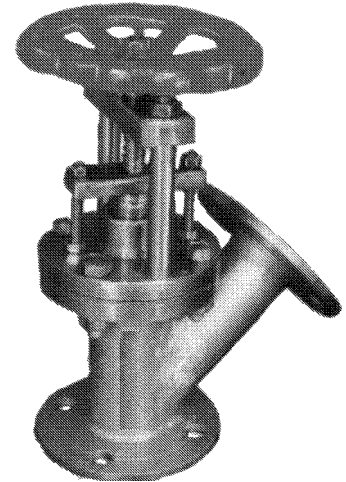
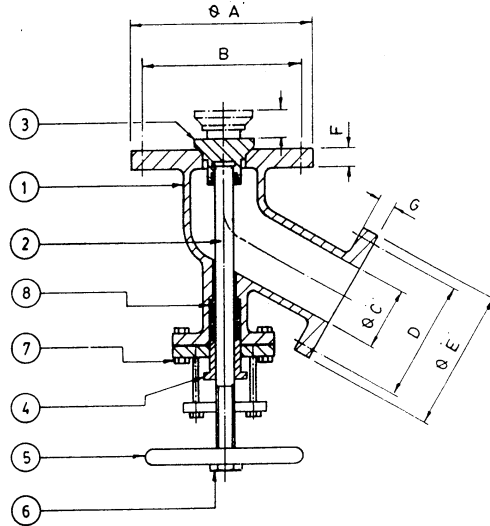
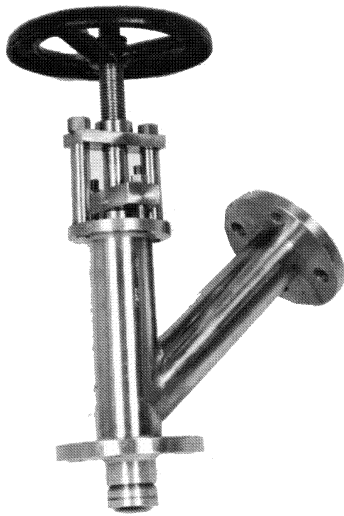


TRINE S. S. FLUSH BOTTOM TANK VALVE



TRINE Y Type flush bottom valves are ideal for liquids containing highly abrasive slurry, high viscosity & other problematic nature which other conventional valves fail to handle.

TRINE Flush Bottom Valve has a unique characteristic of the valve disc going into the vessel when it opens. The cavity between valve disc & bottom of the vessel is eliminated thus settling or solidification of liquid in the valve does not take place.

They can also be manufactured in C.C.S. Construction with flanged end connections in 150# & 300# ratings.

No.	Description	Material
1	Body	S.S. 304 / S.S. 316
2.	Spindle	S.S. 304 / S. S. 316
3	Disc	S.S. 304 / S.S. 316
4	Gland	S.S. 304 / S.S. 316
5	Hand Wheel	C.I.
6	Hand Wheel Nut	S.S. 304 / S.S. 316
7	Bolt & Nut	S.S. 304 / S.S. 316
8	Gland Packing	Teflon

Note :

Flange Dimensions as per ASA 150 # OR

BS : 10 OR DIN Standard

Sizes :

40 x 50

50 x 65

50 x 80

80 x 100

100 x 150