

Thermodynamic Steam Trap

TD 21

Description :

Thermodynamic steam trap with inbuilt strainer and full stainless steel construction, best suited for header and mainline drains and drop legs.

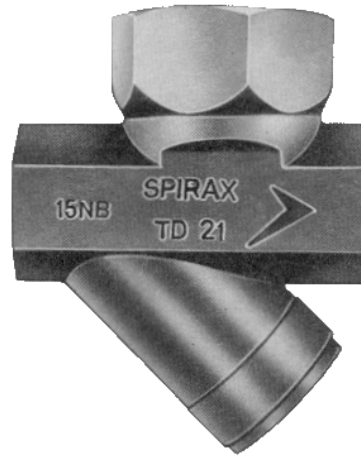
Size :

1/2" Screwed BSPT/NPT

Limiting Conditions :

Maximum operating pressure	21 kg/cm ²
Maximum operating temperature	427 ^o C.
Cold hydraulic test pressure	42 kg/cm ²
Minimum pressure for satisfactory operation	0.25 kg/cm ²

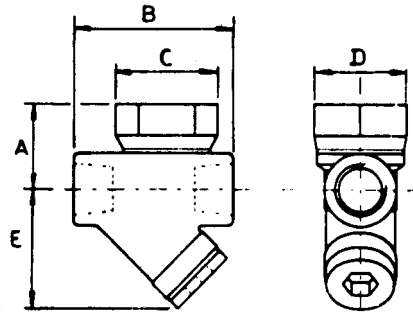
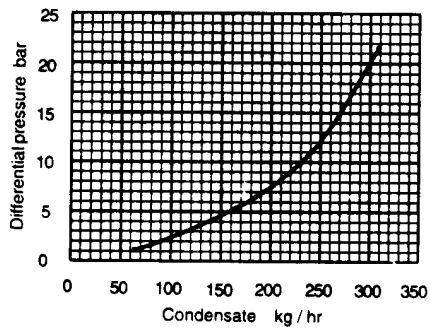
Maximum back-pressure should not exceed 80 % of the inlet pressure.



Material :

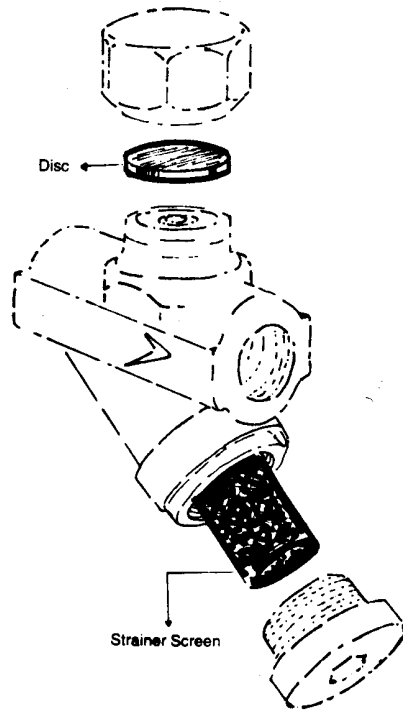
No.	Part Description	Material
1	Body	St. Steel AISI 420
2	Cap	St. Steel AISI 420
3	Disc	St. Steel AISI 420
4	Strainer Screen	St. Steel AISI 304
5	Strainer Cap	St. Steel AISI 420

Capacity :



Dimensions (approximate) in mm.

Size	A	B	C	D	E
1/2"	33	62	40	36	45



Installation :

Preferably in horizontal pipe with the disc on top. Can be fitted in other positions if unavoidable.

Available spares :

The parts available as spares are shown in heavy outline. Parts drawn in dotted line are not available as spares.

Disc (Packet of 5)

Strainer Screen (Packet of 5)

How to service :

Unscrew the cap using a spanner (36A/F). Do not use wrenches which may cause damage to the cap. If the disc and body seating faces are only slightly worn they can be resurfaced by lapping individually on a flat surface such as a surface plate. A figure of eight motion and a little grinding compound gives the best results.

If the wear is too great to be rectified by simple lapping, the seating face on the body must be ground flat and then lapped and the disc replaced by a new one. The total amount of metal removed in this way should not exceed 0.25 mm.

When reassembling, the disc is normally placed in position with the grooved side in contact with the body seating face. Screw on the cap, no gasket is required but a suitable high temperature anti-sieze grease should be applied to the threads.

How to clean or replace the strainer screen:

Unscrew the strainer cap using an allen key(12A/F), withdraw the screen and clean or if damaged replace with a new one. To reassemble, insert the screen in the strainer cap and then screw the cap in its place. No gasket is required but a fine smear of a suitable anti-sieze grease should be applied to the threads.